



Wild Winds, Highlight Lane
Barry, Vale of Glamorgan, CF62 8AA

Watts
& Morgan



Wild Winds Highlight Lane

Barry, Vale of Glamorgan, CF62 8AA

£765,000 Freehold

5 Bedrooms | 4 Bathrooms | 3 Reception Rooms

A spacious and versatile, beautifully presented, five bedroom detached family home situated on a generous plot in the highly sought after Highlight Lane. Conveniently located to local amenities, transport links, Cardiff City Centre and the M4 Motorway. Accommodation briefly comprises; entrance hall, open-plan kitchen/dining/living room, sitting room, formal dining room, utility room and ground floor cloakroom. First floor landing, spacious primary bedroom with walk-in wardrobe and en-suite and two further double bedrooms both with en-suites. Second floor landing, two further double bedrooms and a shower room. Externally the property benefits from a large block paved driveway providing off-road parking for several vehicles and beautifully landscaped and spacious South-facing rear garden. The property further benefits from a detached wooden garage offering possibility for storage or development.

Directions

Cardiff City Centre – 9.1 miles

M4 Motorway – 7.9 miles

Your local office: Penarth

T: 02920 712266 (1)

E: penarth@wattsandmorgan.co.uk





Ground Floor

Entered via a partially glazed uPVC door with glazed side panels into a spacious, welcoming hallway benefitting from tile effect luxury vinyl tile (LVT) flooring with underfloor heating and a carpeted staircase with an understairs storage cupboard leading to the first floor.

The spacious, open-plan kitchen/dining/living room is the focal point of the home and benefits from continuation of LVT flooring with underfloor heating, a central feature log burner with a marble hearth and a wood mantel and a set of uPVC double-glazed bi-folding doors providing access to the garden. The kitchen showcases a range of wall and base units with roll top laminate work surfaces. Integral appliances to remain include; a 'Bosch' electric oven/grill, a 'Lamona' combination microwave, a 'Neff' coffee machine, a 'Bosch' 5-ring gas hob with an extractor fan over, a 'Lamona' dishwasher and a wine cooler. The kitchen further benefits from continuation of LVT flooring, partially tiled splash-back, recessed ceiling spotlights, a bowl and a half stainless steel sink with a mixer tap over and a breakfast bar peninsula with feature pendant lighting over.

The sitting room enjoys carpeted flooring and a uPVC double-glazed window to the front elevation.

The dining room is a versatile space and benefits from carpeted flooring and a uPVC double-glazed window to the front elevation.

The rear porch benefits from tiled flooring, a floating wash hand basin, space and plumbing provided for freestanding white goods, a uPVC double-glazed window to the rear elevation and a partially glazed uPVC door providing access to the rear garden.

The utility room has been fitted with a range of work surfaces with space and plumbing provided for freestanding white goods. The utility room further benefits from tiled flooring, a wall-mounted 'Baxi' combi boiler, wall mounted heated laundry tubes and an obscure uPVC double-glazed window to the side elevation.

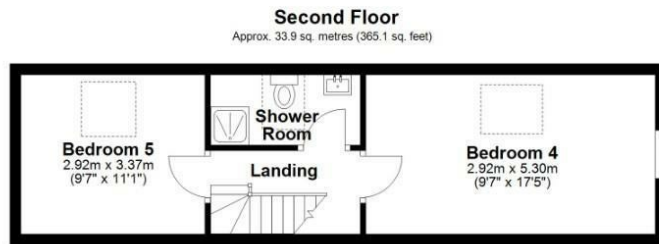
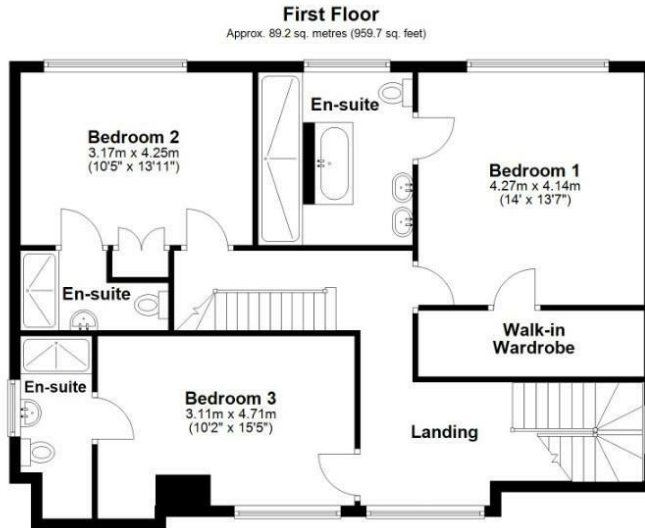
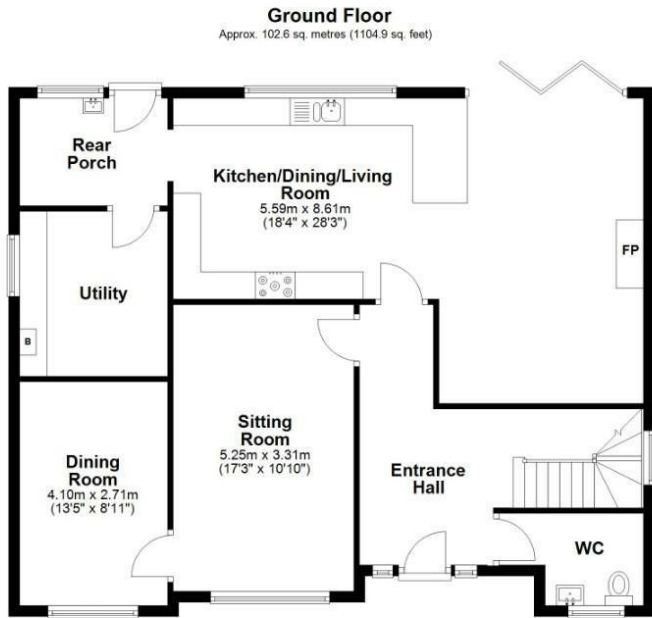
The cloakroom serving the ground floor accommodation has been fitted with a 2-piece white suite comprising; a wash hand basin set within a vanity unit and a WC. The cloakroom further benefits from tiled flooring, partially tiled walls, recessed ceiling spotlights and an obscure uPVC double-glazed window to the front elevation.



First Floor

The first floor landing benefits from carpeted flooring, a feature chandelier light, a carpeted staircase leading to the second floor and two uPVC double-glazed windows to the front and side elevations.

Bedroom one is a spacious double bedroom and benefits from carpeted flooring, a large walk-in wardrobe and a uPVC double-glazed window with bespoke fitted shutters to the rear elevation. The en-suite has been fitted with a 4-piece white suite comprising; a tile panelled bath, double wash hand basins and a WC. The en-suite further benefits from a large walk-in shower with a thermostatic rainfall shower over and a handheld shower attachment, sandstone tiled flooring and walls, recessed ceiling spotlights, two wall-mounted chrome towel radiators and an obscure uPVC double-glazed window to the rear elevation.



Total area: approx. 225.7 sq. metres (2429.7 sq. feet)

Energy Efficiency Rating		Current	Potential
Very energy efficient - lower running costs			
(92 plus) A			
(81-91) B			
(69-80) C			
(55-68) D			
(39-54) E			
(21-38) F			
(1-20) G			
Not energy efficient - higher running costs			
England & Wales	EU Directive 2002/91/EC		

Bedroom two is a double bedroom benefitting from carpeted flooring, a range of recessed wardrobes and a uPVC double-glazed window with bespoke fitted shutters to the rear elevation. The en-suite has been fitted with a 3-piece white suite comprising; a shower cubicle with a thermostatic rainfall shower over and handheld shower attachment, a wash hand basin set within a vanity unit and a WC. The en-suite further benefits from tile flooring, tiled walls, recessed ceiling spotlights, a wall-mounted chrome towel radiator and an extractor fan.

Bedroom three is another spacious double bedroom and benefits from carpeted flooring and a uPVC double-glazed window to the front elevation enjoying countryside views. The en-suite has been fitted with a 3-piece white suite comprising; a shower cubicle with a thermostatic rainfall shower over and a handheld shower attachment, a wash hand basin set within a vanity unit and a WC. The en-suite further benefits from tiled flooring, tiled walls, recessed ceiling spotlights, a wall-mounted chrome towel radiator, an extractor fan and an obscure uPVC double-glazed window to the side elevation.

Second Floor

The second floor landing benefits from carpeted flooring and recessed ceiling spotlights. Bedroom four is another spacious double bedroom benefitting from carpeted flooring, recessed ceiling spotlights, a hatch providing access to eaves storage, a uPVC double-glazed window to the side elevation and a double-glazed roof light with a built-in blind.

Bedroom five is a further double bedroom benefitting from carpeted flooring, two hatches providing access to eaves storage and a double-glazed roof light with a built-in blind. The second floor shower room has been fitted with a 3-piece white suite comprising; a shower cubicle with a thermostatic rainfall shower over and a handheld shower attachment, a wash hand basin set within a vanity unit and a WC. The shower room further benefits from tiled flooring, tiled walls, recessed ceiling spotlights, a wall-mounted towel radiator and a double-glazed roof light.

Garden & Grounds

Wild Winds is approached off the lane onto a large block paved driveway providing off-road parking for several vehicles. The front aspect further benefits from security lighting, mature shrubs and borders, electrical points and an outside water tap. The enclosed, spacious South-facing rear garden is predominantly laid to lawn with a variety of mature shrubs and borders. A patio area with a remote controlled cassette style shade provides ample space for outdoor entertaining and dining.

The rear garden further benefits from a wooden garage accessed via barn style double doors or a pedestrian door with full electrical connections, a plumbed WC and a versatile bar room providing additional reception space with possibility for conversion into home office/studio.

Additional Information

All mains services connected.

Freehold.

Council tax band 'G'.

EPC rating 'C'.

Any maps and floor plans included in these sales particulars are not accurate or drawn to scale and are intended only to help prospective purchasers visualise the layout of the property. They do not form any part of any contract.



Bridgend
T 01656 644 288
E bridgend@wattsandmorgan.co.uk

Cowbridge
T 01446 773 500
E cowbridge@wattsandmorgan.co.uk

Penarth
T 029 2071 2266
E penarth@wattsandmorgan.co.uk

London
T 020 7467 5330
E london@wattsandmorgan.co.uk

Follow us on
  

**Watts
& Morgan**